

AEO PFCLS-1480-150 Precise Fiber Coupled Laser Source

Specifications				
Optical Parameters	Minimum	Typical	Maximum	note
Wavelength	1445.5 nm	1477 nm	1478.5 nm	
Spectral line width	0.1nm	0.5nm	8nm	
Wavelength tunable range	0.01nm	0.05 nm	1.0nm	TEC control
Laser light output power	0	100mw	150 mw	
Light output stability		20 dbm ± 0.01dbm after power on 2 minutes 24 hr		
Light tune resolution		0.02 dbm		
Adjustment range	0	150 mw	150mw	
Laser TEC stability		Setting in 25.00 °C TEC Stability : 25 °C ± 0.01°C / 24 hour		
TEC Set Point Resolution		±0.1 °C		
Adjustment Range		15 ± 1 °C to 35± 1 °C		
Optical	Minimum	Typical	Maximum	note
Fiber type		Single mode		
Internal optical Isolator		yes		
Fiber coupler connector		FC/PC		
Output Display		mW/dbm		
Laser emergency on/off		Yes, panel button control		

Specifications				
Electrical Parameters	Minimum	Typical	Maximum	note
AC Input		115/230 VAC 50 - 60 Hz		*Jumper selection
Power Consumption		11 W	12 w	
Communication Interface		RS232		**optional
Communication protocols		ASCII code		**optional
Inter lock		External Switch		**optional
Power tune resolution		0.02 dbm		
External modulation		sinusoidal wave AC 0~1V / 0~1000hz		**optional
Reliability				
Storage Temperature		-10~70 °C		
Operating Temperature		10~50 °C		
Mechanical parameters				
Dimension		8.661" L x 6.496" W (219.99mm x 165.00mm) X 2.028" (51.51mm)		
Enclosures material		Metal Aluminum		
Weight		1.8 KG		

*default: Internal AC Jumper set for 110V/60hz, if AC is 220V, need ask on order.

**this function is available only request on order with different price.

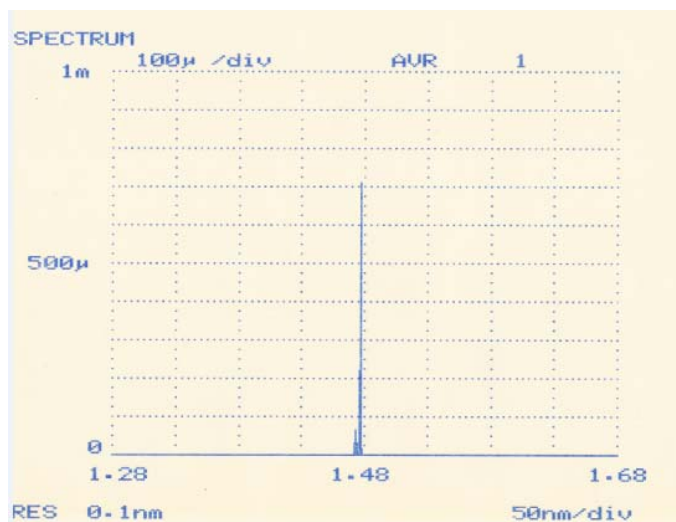


Figure 1 Central Wavelength = 1477.00 nm Laser Source Temperature set in 25.00°C

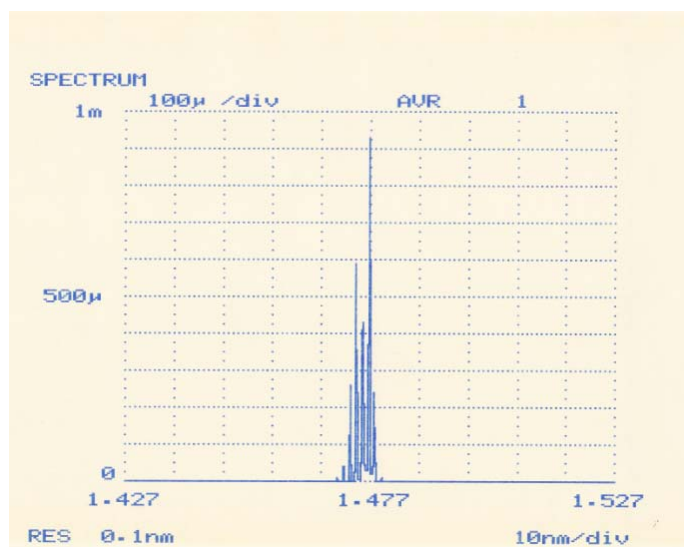


Figure 2 Central Wavelength = 1477.00 nm Laser Source Temperature set in 25.00°C